

**NOTE:**  
 THIS MAP IS FOR ILLUSTRATIVE PURPOSES ONLY. ACTUAL LOCATION OF ZONING BOUNDARIES ON SPECIFIC PARCELS SHALL BE FIELD SURVEYED BY A REGISTERED LAND SURVEY.

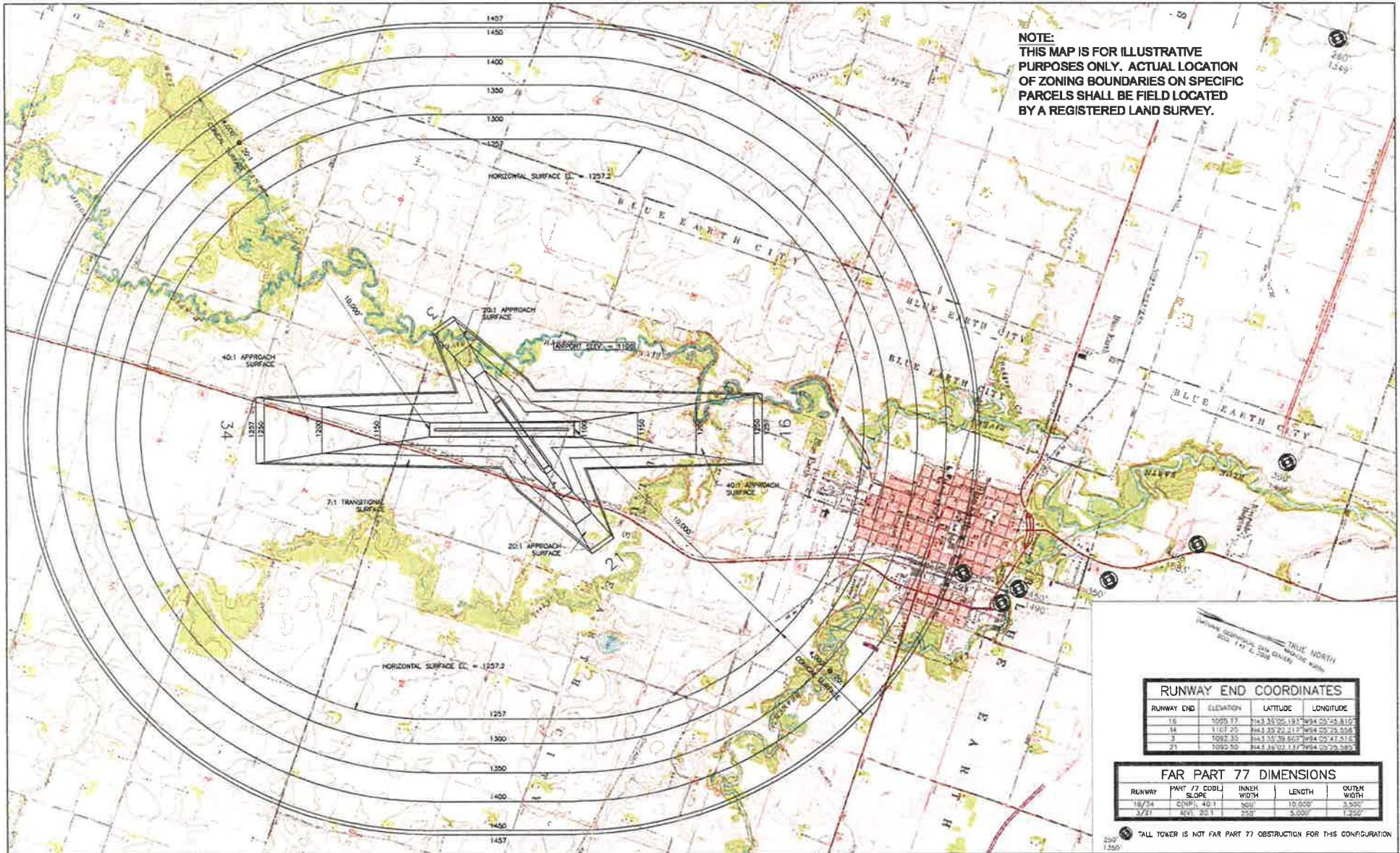


**BOLTON & MENK, INC.**  
 Consulting Engineers & Surveyors  
 MANKATO, MN FAIRMONT, MN SLEEPY LYLE, MN  
 BURNSVILLE, MN WILLMAR, MN CHASKA, MN  
 RANSEY, MN MAPLEWOOD, MN BRANDED, MN AMES, IA

BLUE EARTH MUNICIPAL AIRPORT		EXHIBIT
AIRPORT ZONING ORDINANCE		1
LAND USE ZONING MAP		

Bolton & Menk, Inc. © 2011. All Rights Reserved.  
 File No. 144-1076 "Map 1000001.dwg" - 1:500 (from Zoning Map Book 179 of 180)

**NOTE:**  
 THIS MAP IS FOR ILLUSTRATIVE  
 PURPOSES ONLY. ACTUAL LOCATION  
 OF ZONING BOUNDARIES ON SPECIFIC  
 PARCELS SHALL BE FIELD LOCATED  
 BY A REGISTERED LAND SURVEY.



RUNWAY END COORDINATES			
RUNWAY END	ELEVATION	LATITUDE	LONGITUDE
16	1095.17	44.33 05.191	94.05 25.816
34	1107.25	44.33 22.817	94.05 25.508
3	1092.33	44.33 28.857	94.05 27.816
31	1093.50	44.33 07.137	94.05 25.508

FAR PART 77 DIMENSIONS					
RUNWAY	PART 77 CODE	SLOPE	INNER WIDTH	LENGTH	OUTER WIDTH
16/34	3	AVL 20:1	300'	10,000'	3,000'
3/31	3	AVL 20:1	300'	5,000'	1,200'

TALL TOWER IS NOT FAR PART 77 OBSTRUCTION FOR THIS CONFIGURATION

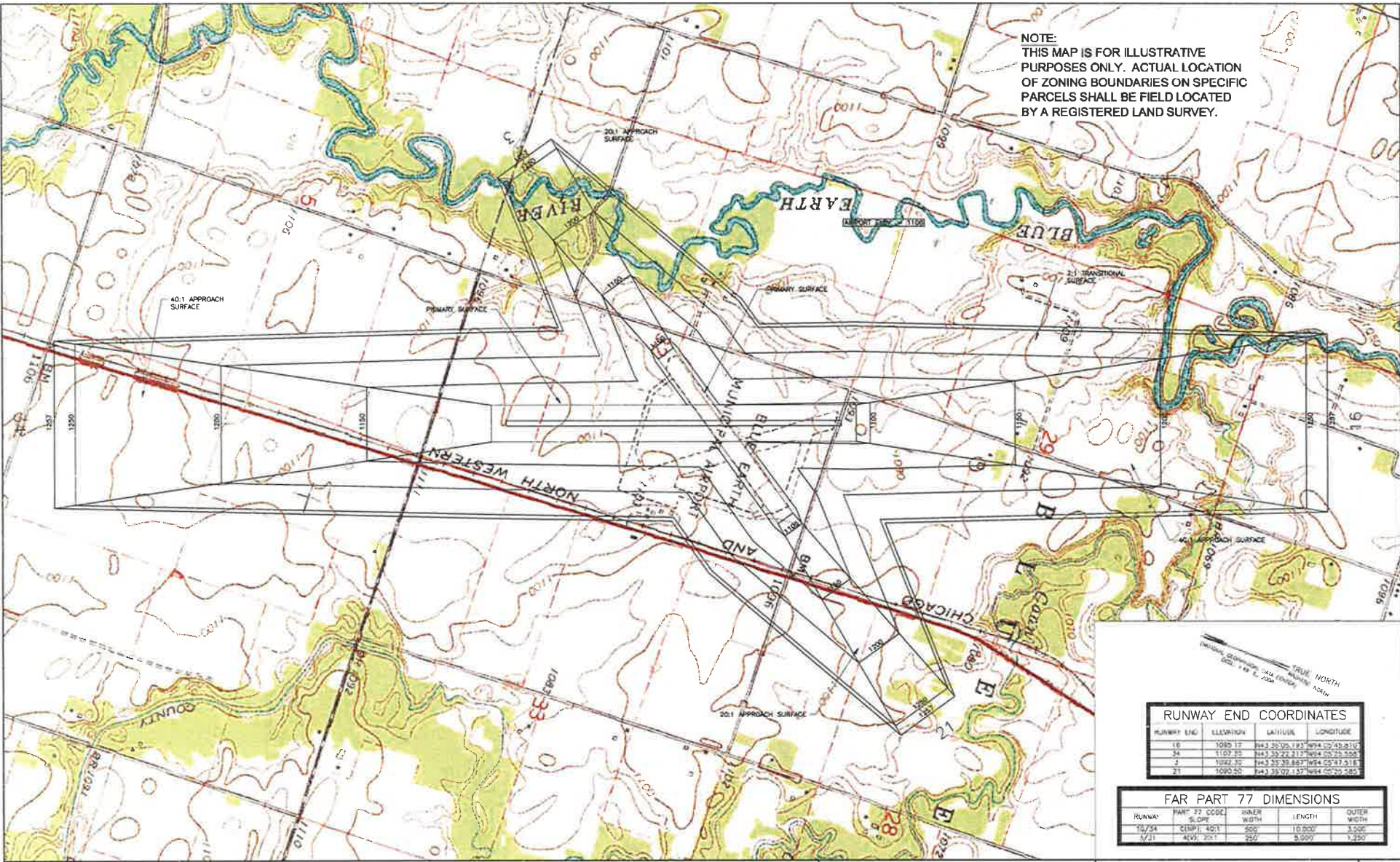


**BOLTON & MENK, INC.**  
 Consulting Engineers & Surveyors  
 MINNEAPOLIS, MN PARKERSBURG, IOWA SLEEPY HOLE, MN  
 DUNROSVILLE, MN WELLSBURG, MN CHASKA, MN  
 KANSAS CITY, MO MAPLEWOOD, MN MINNEAPOLIS, MN WALES, IA

**BLUE EARTH MUNICIPAL AIRPORT**  
 AIRPORT ZONING ORDINANCE  
 AIRSPACE MAP

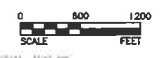
Bolton & Menk, Inc. 2011. All rights reserved.  
 01-16-11 10:00 AM 10/20/2011 10:00 AM - Airport 001.dwg 12/21/11 11:53 AM

NOTE:  
THIS MAP IS FOR ILLUSTRATIVE  
PURPOSES ONLY. ACTUAL LOCATION  
OF ZONING BOUNDARIES ON SPECIFIC  
PARCELS SHALL BE FIELD LOCATED  
BY A REGISTERED LAND SURVEY.



RUNWAY END COORDINATES			
RUNWAY END	ELEVATION	LATITUDE	LONGITUDE
16	1090.17	44°33'05.193"N	94°42'49.810"W
34	1100.20	44°33'22.211"N	94°42'29.008"W
2	1062.32	44°33'33.867"N	94°42'47.516"W
21	1090.50	44°33'07.157"N	94°42'26.585"W

FAR PART 77 DIMENSIONS				
RUNWAY	FAH <sup>2</sup> CODE	INNER WIDTH	LENGTH	OUTER WIDTH
16/34	4511	500'	10,000'	3,500'
2/21	4511	250'	8,000'	1,250'



Bolton & Menk, Inc. All rights reserved.  
© 2011 Bolton & Menk, Inc. All rights reserved.

**BOLTON & MENK, INC.**  
Consulting Engineers & Surveyors  
MANKATO, MN FARMINGTON, MN SLEEPY HOLLOW, MN  
BURNSVILLE, MN WILLMAR, MN CHASKA, MN  
HANSEY, MN MAPLEWOOD, MN BRANFORD, MN ANOKA, MN

BLUE EARTH MUNICIPAL AIRPORT  
AIRPORT ZONING ORDINANCE  
AIRSPACE MAP